

# ARTEOR™

2014 EDITION

WIRING DEVICES / HOME AUTOMATION SYSTEMS

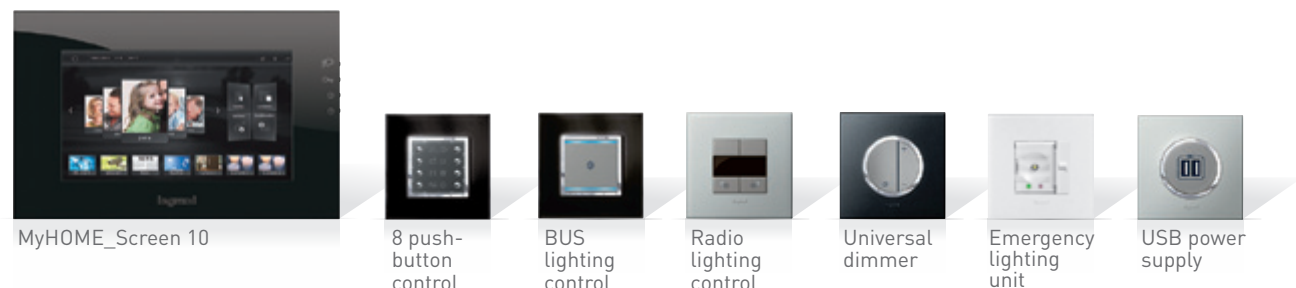


→ CATALOGUE PAGES INSIDE

THE GLOBAL SPECIALIST  
IN ELECTRICAL AND DIGITAL BUILDING INFRASTRUCTURES

 **legrand®**

## HIGHLIGHTS FOR RESIDENTIAL BUILDINGS



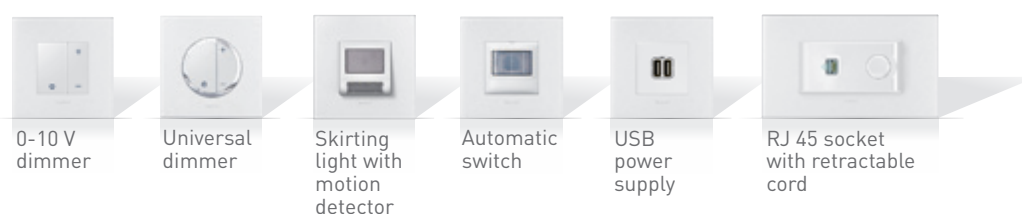
# THE POWER OF NEW IDEAS

The universal wiring device range Arteor™ now offers you an even wider selection: From its intelligent new stand-alone functions, via a wide choice of multimedia outlets for the home and workplace, through to the new intuitively user-friendly MyHOME\_Screen 10, Arteor™ is the ideal solution, always and everywhere.

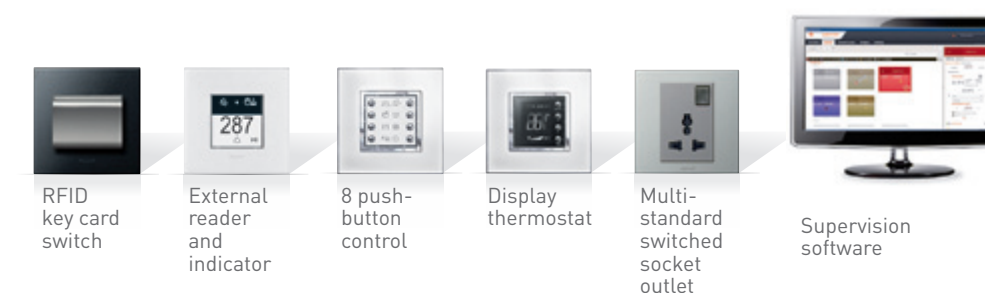
## Contents

General introduction	p. 4 – 9
Home automation: what's new at a glance	p. 10/11
MyHOME_Screen 10 Energy Consumption Display	p. 12/13
Energy efficiency: what's new at a glance	p. 14/15
Highlights for residential buildings	p. 16 – 25
Highlights for office buildings	p. 26 – 33
Highlights for hospitality buildings	p. 34 – 41
Catalogue pages	p. XXX

## HIGHLIGHTS FOR OFFICE BUILDINGS



## HIGHLIGHTS FOR HOSPITALITY BUILDINGS





# ARTEOR™

SIMPLY FITS YOUR NEEDS



ONE UNIQUE  
DESIGN,  
VIRTUALLY  
ENDLESS  
VERSATILITY

Its versatility makes Arteor™ the ideal choice for any type of project, wherever in the world, whatever the installation level.

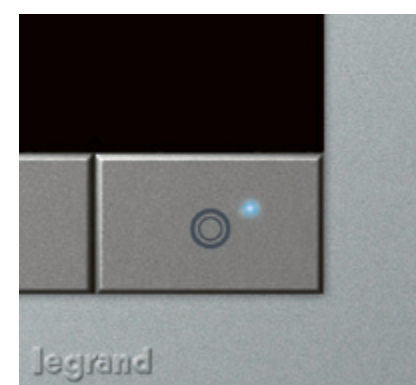
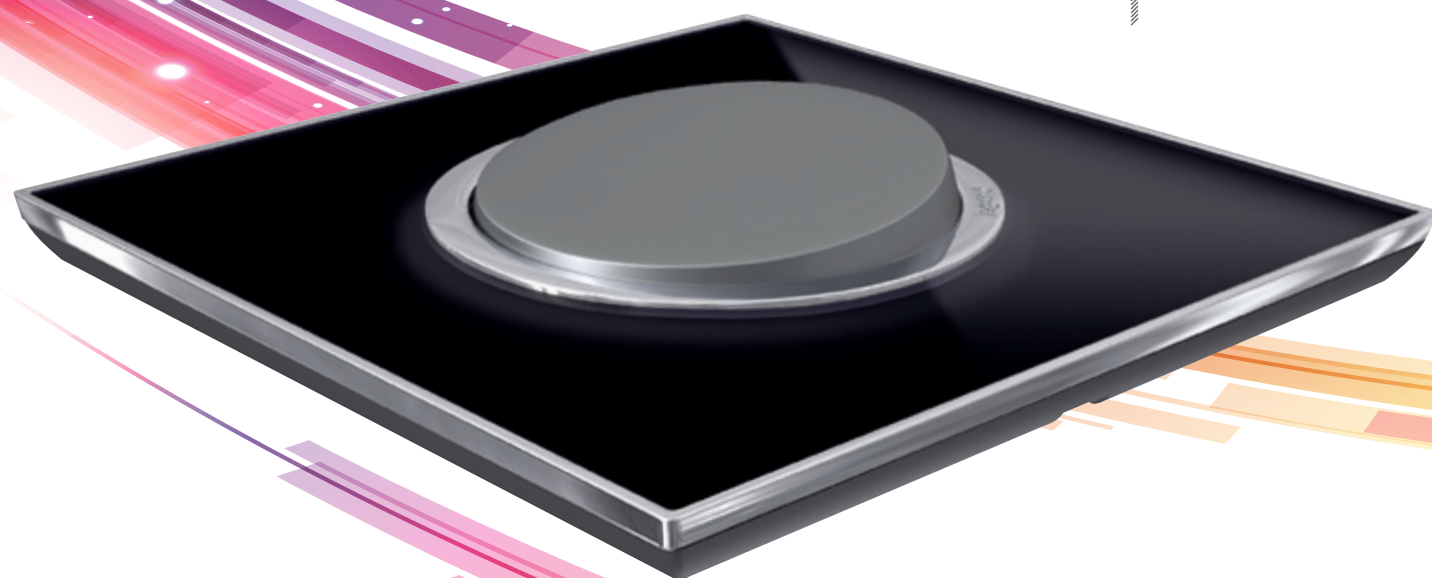
From a stand-alone solution to a fully networked home system, the complete spectrum of functions for every desired application can be covered within a single design, making sure you don't have to compromise either on technical or on aesthetic criteria.



# ARTEOR™ DESIGN FOR A GLOBAL LIFESTYLE

## TIMELESS DESIGN WITH A HIGH-TECH TOUCH

Minimalist and sober, Arteor's carefully crafted design is inspired by modern technological devices such as flat screens. It creates the impression that the product is floating on the wall.



Stand-alone



Radio



BUS



## AN EVEN WIDER CHOICE

Design options include the choice of ergonomics for all control functions. Whether stand-alone or home automation – every control function is now available in both round and square versions.



# ARTEOR™

## CHOOSE YOUR OWN STYLE



MIRROR

From the elegant simplicity of the standard finishes of the Neutral collection to the refinement of genuine materials such as wood, leather or woven metal in the Signature line: Arteor™ offers a rich choice of colours and fine fabrics to make each room truly unique.

NEUTRAL

TATTOO

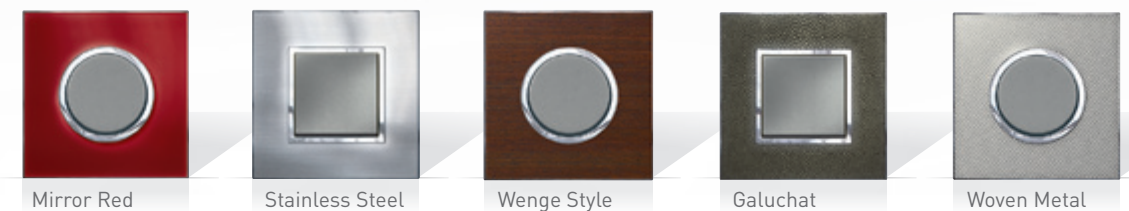
GRAPHIC

BRUSHED METAL

WOOD

LEATHER

SIGNATURE





# ARTEOR™ HOME AUTOMATION: WHAT'S NEW AT A GLANCE

## GET IN TOUCH WITH TOMORROW

Greater possibilities, enhanced functions, easier operation - a combination of new products and numerous improvements on existing ones has taken the Arteor™ offering for home automation a step further. This way, Arteor™ makes it even easier for design engineers and electrical contractors to produce the right solutions to convince even the most demanding customers.

### MyHOME\_SCREEN 3.5

Enhanced user interface for intuitive navigation. Now also including the energy management feature.



### LOCAL DISPLAY

Four functions inside a single device: scenario control, sound distribution, temperature control and energy management.



### 8 PUSH-BUTTON CONTROL

Choose from 8 individually customisable functions. Made even more user-friendly by the use of push-buttons. Possibility of customising symbols.



### DISPLAY THERMOSTAT

Temperature control set individually in each room or centrally (in combination with a central unit) for the whole house. Fan coil control included.



### MyHOME\_SCREEN 10

New intuitive graphic user interface for central control of the whole house. Fully customisable user profiles, with navigation by rooms. Including energy management, multimedia and door entry functions.



For further details see p. 12/13 and p. 18/19



# MyHOME\_SCREEN 10

## ENERGY CONSUMPTION DISPLAY

### VISIBILITY DRIVES SAVINGS

#### A COMPLETE CONSUMPTION CHECK-UP



Electricity Water Gas

The new MyHOME\_Screen 10 allows for real time display and management of electricity, gas and water consumption levels.

#### MONITORING ENERGY PRODUCTION

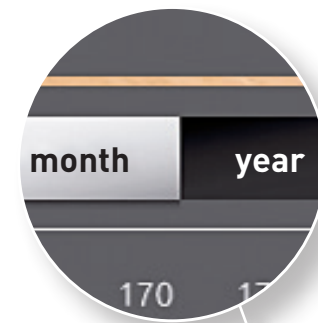


Heating/  
Cooling Hot water

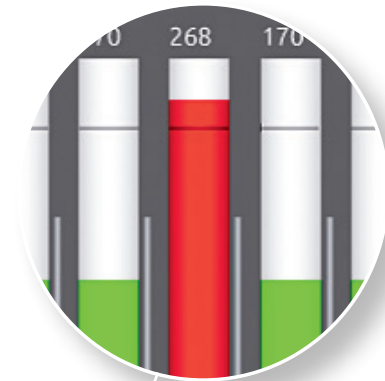
Also, the consumption display allows to monitor the energy and hot water output obtained by using photovoltaic or solar panels.

#### MyHOME\_SCREEN 10 ENERGY MANAGEMENT

By accurately indicating whether current consumption is above (red) or below (green) the previous average, the energy management function makes it easy for users to become more aware of their energy consumption and facilitates taking action to adjust their behaviour patterns. This monitoring function can be customised to suit individual needs and the conditions of each house.



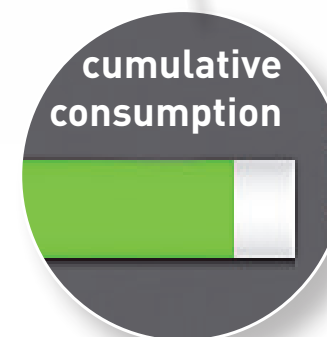
Choice of the desired period to be monitored:  
day/month/year



Clear display of the consumption level:  
direct feedback as to whether or not the consumption exceeds the month's average



Possibility of checking the instantaneous consumption level



Possibility of checking the year's cumulative consumption



# ARTEOR™

## ENERGY EFFICIENCY: WHAT'S NEW AT A GLANCE



Universal dimmer

### THE NEW UNIVERSAL DIMMER

#### A SINGLE DIMMER FOR ALL MODERN TYPES OF LOADS

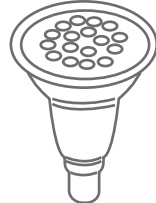
The new universal dimmer is suitable for all modern types of loads, including dimmable CFLs and LEDs. It offers the possibility of using preset lighting levels (33%, 66%) and has a level memory function.



Compact  
fluorescent lamps



Halogen  
lamps



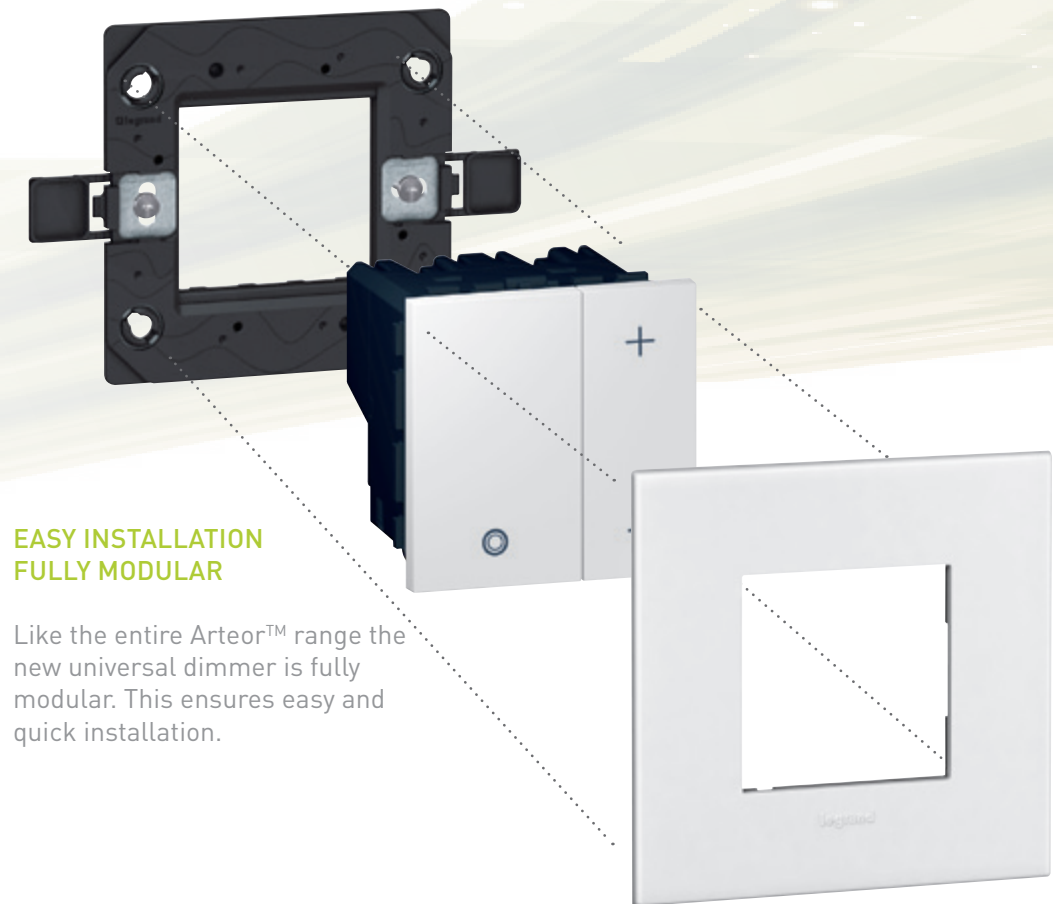
LED  
lamps



Application  
example  
see p. 20

#### 2 WIRES ONLY

The universal dimmer can be installed without a neutral wire. It's the perfect choice for new buildings as well as renovation, i.e. for easy replacement of a traditional switch.



#### EASY INSTALLATION FULLY MODULAR

Like the entire Arteor™ range the new universal dimmer is fully modular. This ensures easy and quick installation.

### FACILITATING TARGETED USE OF LIGHT



#### AUTOMATIC SWITCH

The automatic switch contributes to putting a stop to energy waste by delivering just the right lighting when it's needed – and only as long as it's needed.



#### SKIRTING LIGHT WITH MOTION DETECTOR

Skirting lights with built-in motion detector not only help to cut energy bills but also provide enhanced safety.





MyHOME\_Screen 10



Display thermostat



8 push-button control



Universal dimmer



Skirting light with motion detector



Emergency lighting unit



USB power supply



USB power supply with retractable cord



TV-R-SAT socket



Home Cinema connection points

# ARTEOR™

HIGHLIGHTS FOR RESIDENTIAL BUILDINGS



# MyHOME\_SCREEN 10

## THE HUMAN TOUCH

Designed around the users' needs, the new wall mounting MyHOME\_Screen 10 makes control of home automation even more intuitive. This control centre for the entire home is fully customisable and allows for easy navigation, room by room. It combines home control, energy management, video door entry, management of multimedia content (photos, audio, video) and Internet connection, all in just one device.



### WEB BROWSER AND MULTIMEDIA MANAGEMENT



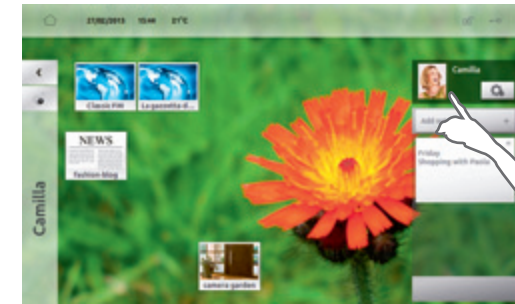
One single screen for managing multimedia files (photo/audio/video) and staying connected to the Internet

### VIDEO DOOR ENTRY FUNCTION INCLUDED

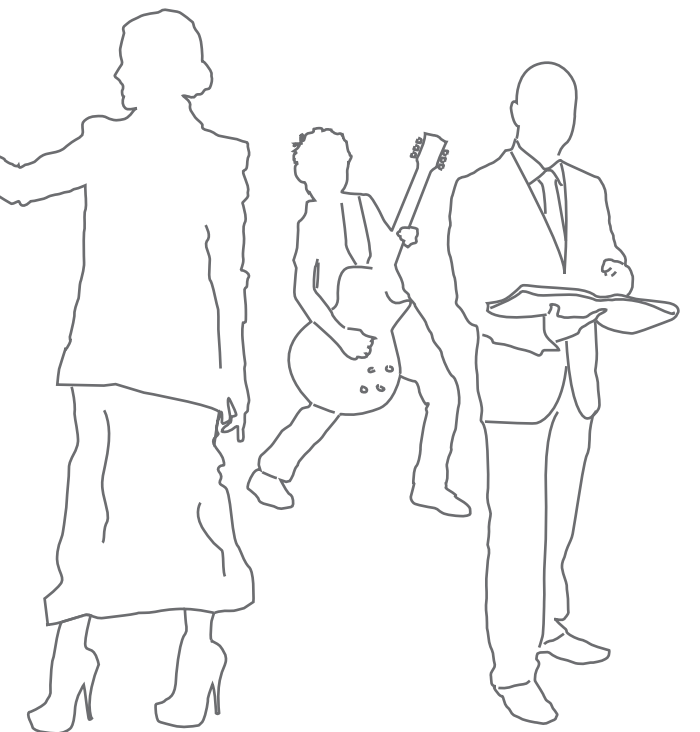


Integrated management of home automation and video door entry function

### FULLY CUSTOMISABLE



User profiles and background images are fully customisable. Favourite scenarios, shortcuts to websites, personal memo block: each user can create their own profile according to their needs.



### BROWSING BY ROOM



Easy and intuitive navigation between rooms.

### ENERGY MANAGEMENT

Energy consumption display with clear information

For more details on the energy management function see p. 12/13



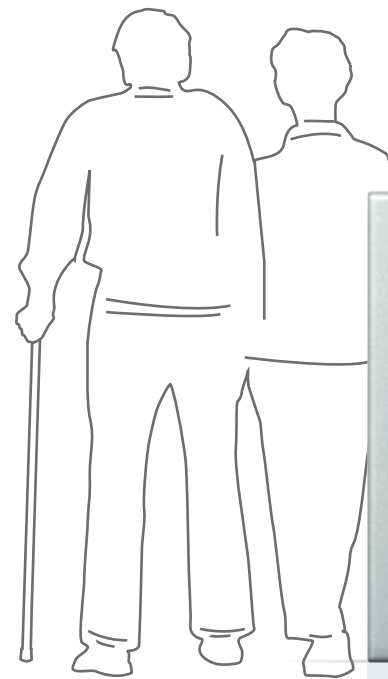
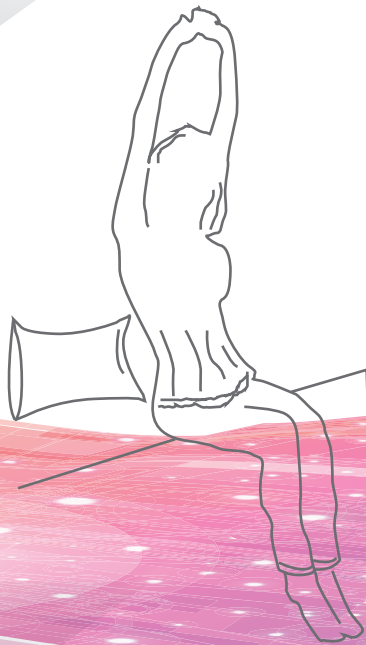
# THE PERFECT COMBINATION OF COMFORT, SAFETY AND ENERGY EFFICIENCY

## UNIVERSAL DIMMER

Also see  
p. 14/15

Suitable for all types of modern loads including dimmable CFLs and LEDs.

Its nightlight function makes the universal dimmer the ideal choice for bedrooms or children's rooms: Once switched ON at a preset level (e.g. 33%) the light will fade gradually for one hour until it turns completely OFF.



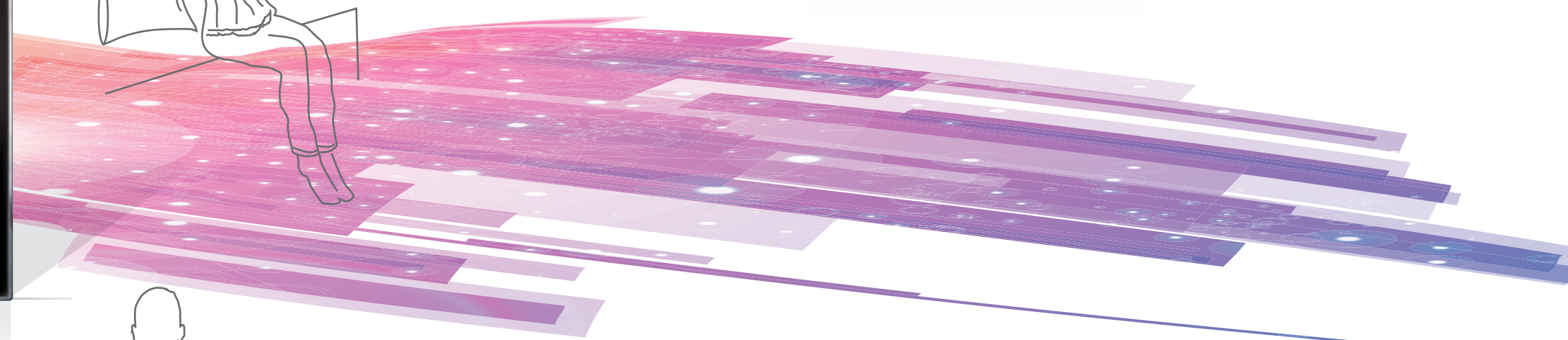
## SKIRTING LIGHT WITH MOTION DETECTOR

Installed in passageways, these skirting lights with their built-in motion detector allow to create illuminated paths. By helping to find one's bearings in the dark without having to switch on the light, they contribute to preventing injury through falls. Placed at the foot of the bed, they enable safely moving around at night without waking up any other person sleeping in the same room.



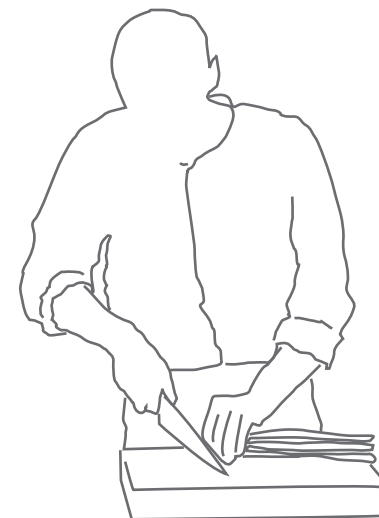
## 8 PUSH-BUTTON CONTROL

The BUS-based 8 push-button control allows to control 8 functions or scenarios tailored to the user's needs. Symbols can be customised - for clear and easy identification of the functions or scenarios.



## DISPLAY THERMOSTAT

Temperature control set individually in each room or centrally (in combination with a central unit), for certain areas or the whole house. Possibility of fan coil control.



## MINIATURE EMERGENCY LIGHTING UNIT

Disabled as long as the power supply is normal, the miniature emergency lighting unit comes on in the event of a power failure. It can be taken out of its base and carried along as a torch. This way a charged emergency lamp is always at hand and no one has to grope in the dark.





# NEAT INSTALLATION FOR A PERFECT HOME CINEMA EXPERIENCE

Large, modern flat screens offer much more than just first class HD image quality. Mounted on the wall, they become an aesthetically attractive solution even in small rooms – if a few points are considered when planning the home cinema system.

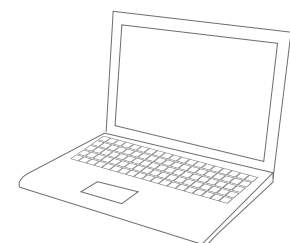
## TV SOCKET

Ensures connection for radio, TV and satellite sources

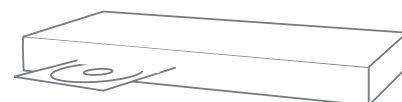


## HOME CINEMA CONNECTIVITY - NO MORE CABLE JUMBLE

All connections needed between the screen and other devices like a DVD player, PC or games console should be identified beforehand, as exposed cables would disrupt the visual effect. This way the necessary multimedia sockets (RJ 45, RCA, HDMI, loudspeaker sockets, etc.) can be positioned properly and cables can be installed in the wall. As more and more devices need to be connected to power – make sure to plan a sufficient number of sockets as well.

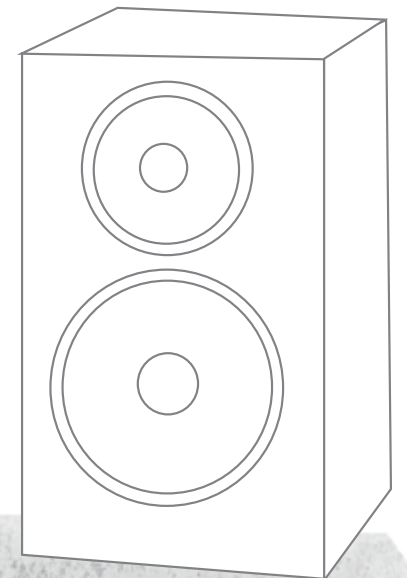


HDMI sockets allow to transmit high definition digital audio/video streams from a DVD/Blue-Ray player or computer to a compatible screen (LED, LCD etc.)



Game consoles can be connected to the screen via HDMI connectivity.

Only a perfect sound rendition makes your home cinema experience really complete. For a cinema-like surround sound, at least 5 loudspeakers need to be distributed around the room. Ideally, with no cables cluttering the space. This can be achieved easily through the use of loudspeaker sockets – if the connection is anticipated at the planning stage.



## LOUDSPEAKER SOCKET

For a perfect sound rendition – and no risk of tripping over cables.





# MORE MOBILITY

## USB POWER SUPPLY - WHEREVER IT'S HANDY

For convenient charging of mobile devices - directly through USB connectivity. And even more convenient: the USB power supply with retractable cord for smartphones with a Micro-USB connector. You don't even need a separate charging cord any more.



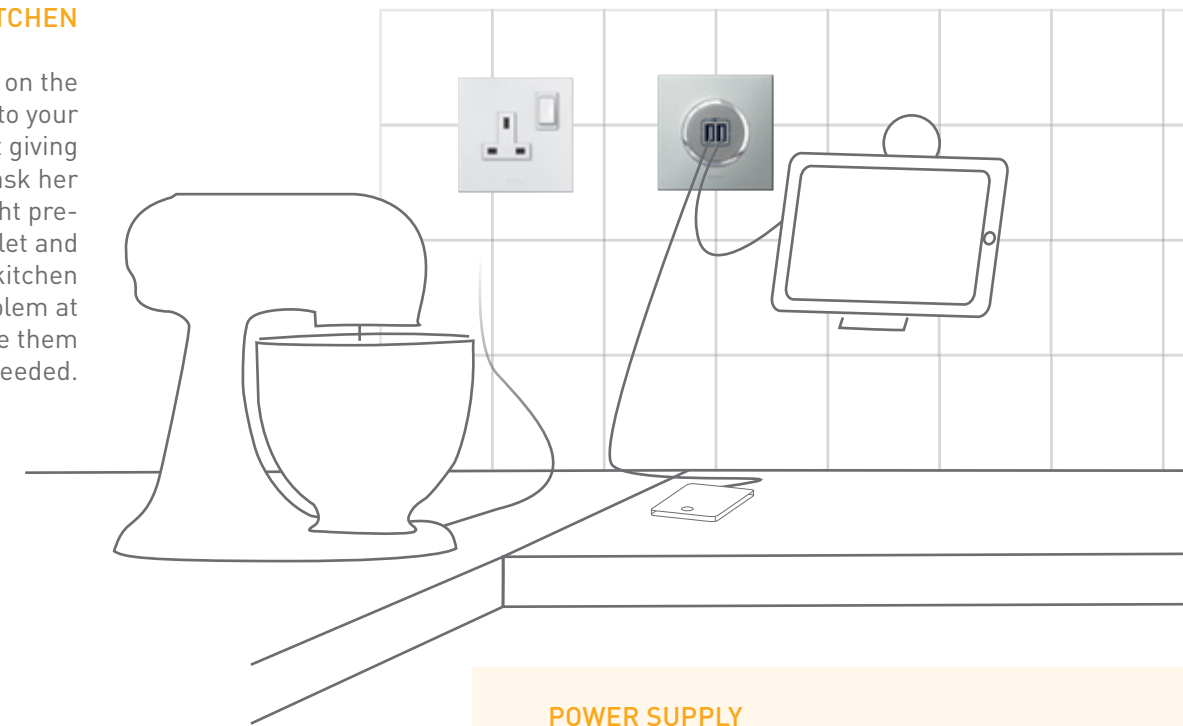
USB power supply



USB power supply with retractable cord

### IN THE KITCHEN

Looking up a recipe on the Internet, listening to your favourite music or just giving your mother a call to ask her for advice on the right preparation? With your tablet and smartphone near the kitchen worktop, that's no problem at all, as you can charge them easily whenever needed.



### POWER SUPPLY

Arteor provides all major standards and types of sockets: British, US, Italian, German, French, Korean, Indian, Chinese, Australian, South African... A truly international range.



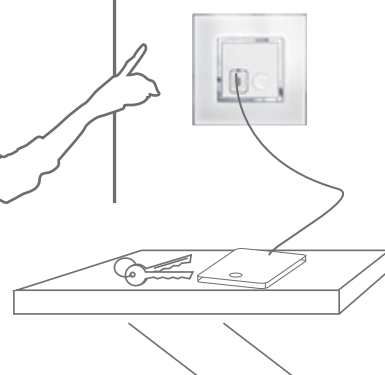
British standard



Euro/US, Italian, French and German standards

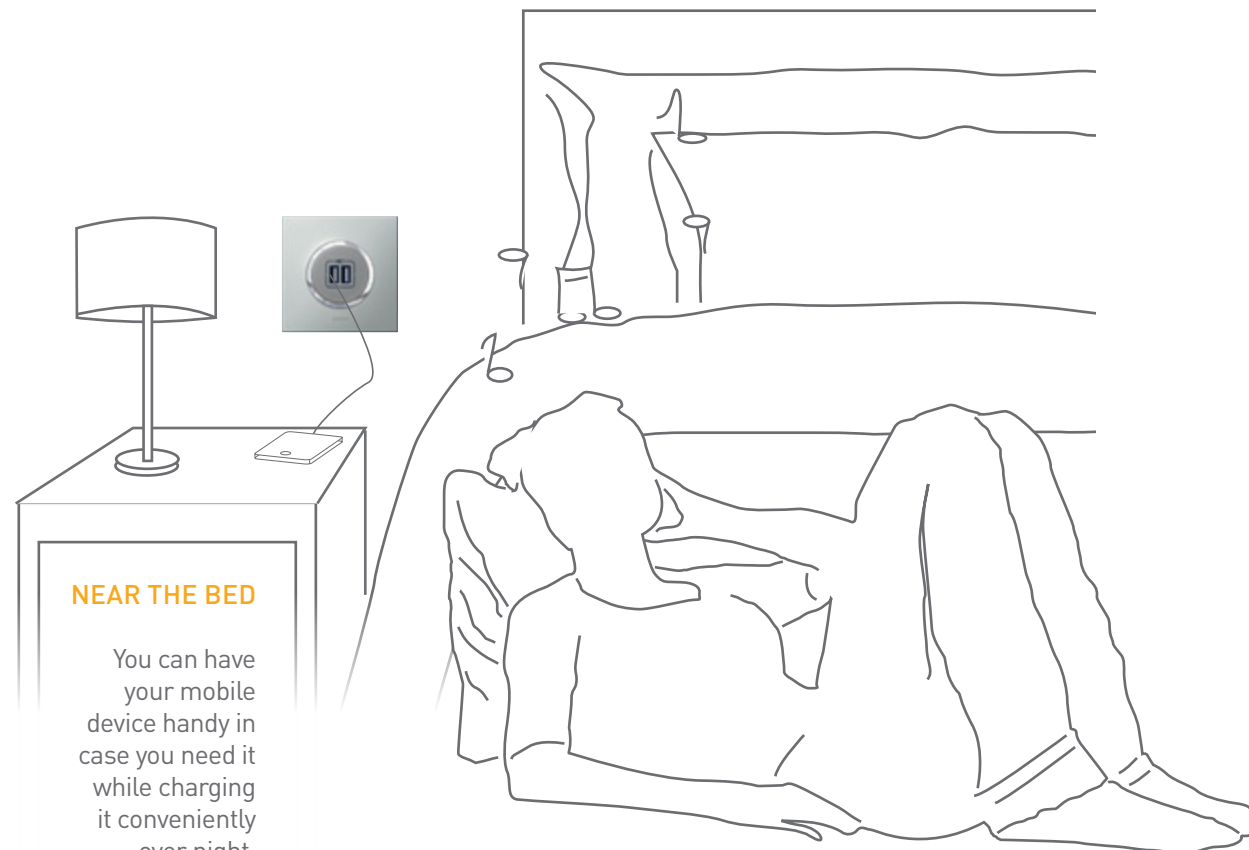
### NEAR THE ENTRY

Charge your smart-phone when coming home without having to search for the charging cord. And you'll never leave without it again - it's waiting for you just beside the front door.



### NEAR THE BED

You can have your mobile device handy in case you need it while charging it conveniently over night.







# ARTEOR™

HIGHLIGHTS FOR OFFICE BUILDINGS



# EFFICIENT LIGHTING CONTROL FOR COMMERCIAL BUILDINGS

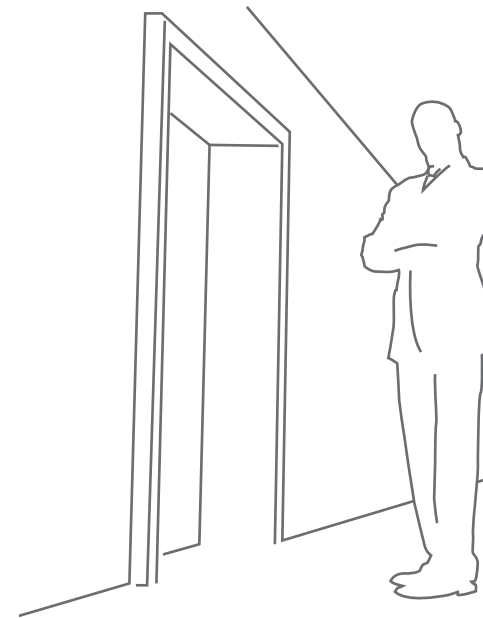
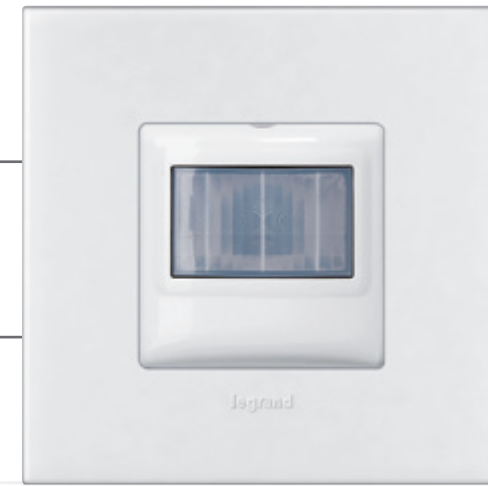
## UNIVERSAL DIMMER

Suitable for dimmable CFL and LED lamps. Enables to take full advantage of the energy saving potential of modern types of loads.

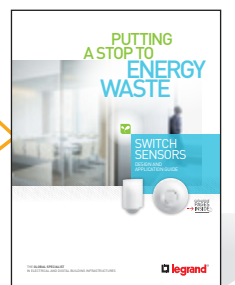


## AUTOMATIC SWITCH

An energy efficient choice for passageways, washrooms or storage rooms, to ensure that lights are on only when they're needed, and only as long as they are needed.



Arteor controls are compatible with Legrand lighting management solutions. Check out our lighting management offer



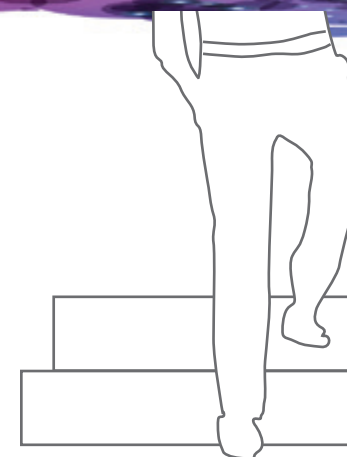
## 0-10V DIMMER

ON/OFF and dimming control for 0-10V ballasts.



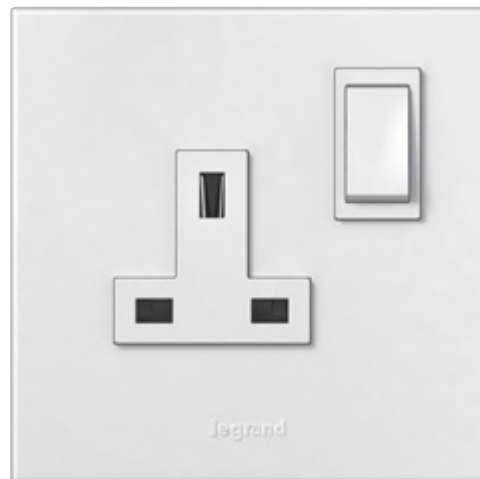
## SKIRTING LIGHT WITH MOTION DETECTOR

Contributes to cutting the energy bill but also provides enhanced security in staircases and corridors.



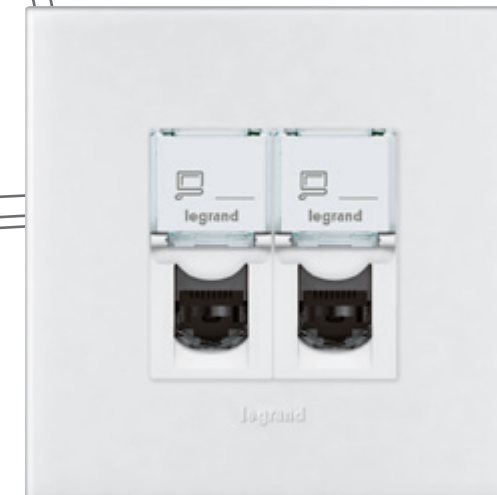


# SOLUTIONS FOR A CONNECTED WORLD



## POWER SOCKETS

Designed to adapt to the majority of international standards, Arteor provides the solution for your projects, wherever they are in the world.



## RJ 45 SOCKETS

For reliable access to data networks and the Internet

## USB POWER SUPPLY

For charging portable devices such as smartphones, tablet PCs, etc. Provides freedom from the restriction of a mobile charger and socket standards. Ideal for any environment receiving international visitors.



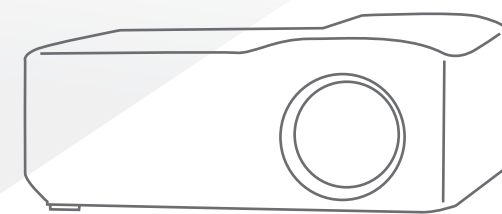
## PRECONNECTED USB SOCKETS

Bringing connections closer to the user, USB data sockets allow to connect devices such as printer-scanners, external hard disks or interactive whiteboards.



## RJ 45 SOCKET WITH RETRACTABLE CORD

Provides greater flexibility, e.g. in meeting rooms for accessing data networks and the web. Cord winds up automatically using a push-button.



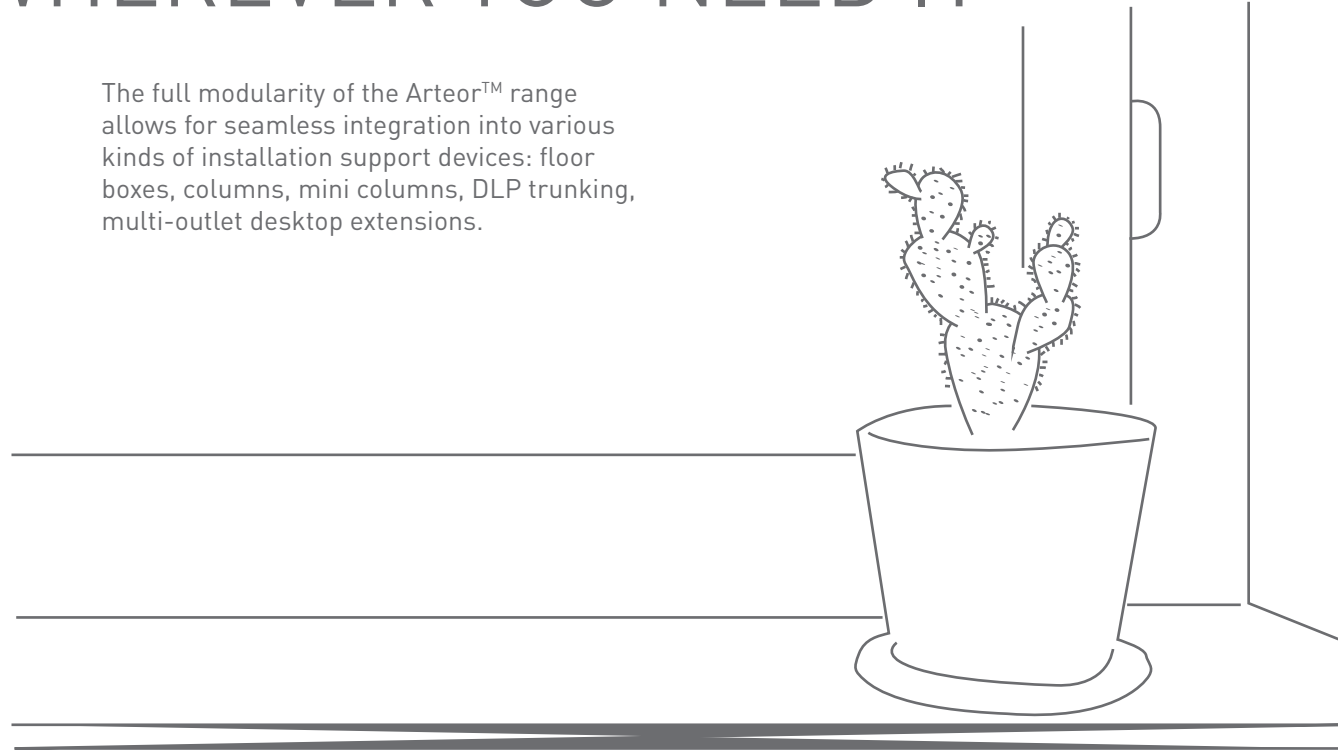
## PRECONNECTED HDMI SOCKET

Equipped with female connectors and a 15 cm lead for quick connection to a cord already fitted with a male plug.

Facilitates the use of modern presentational media as it enables easy connection of HD-DVD drives or computers to a compatible plasma or LCD screen.

# CONNECTIVITY WHEREVER YOU NEED IT

The full modularity of the Arteor™ range allows for seamless integration into various kinds of installation support devices: floor boxes, columns, mini columns, DLP trunking, multi-outlet desktop extensions.



## MULTI-OUTLET DESKTOP EXTENSIONS

Desktop extension modules can support different standards for power sockets or innovative functions. They provide high flexibility and ease of use for both mobile and desk-based users. Available fully equipped, customisable or custom-made.



## COLUMNS AND MINI-COLUMNS

Supplied through false floor or false ceiling and fitted with Arteor™ RJ 45 and power sockets, columns and mini-columns allow power and data distribution as closely as possible to the workstation.



## POP-UP BOXES

Pop-up boxes can be equipped with Arteor™ power and data sockets. Suitable for floor and desk installation, they provide rapid connection for all modern office devices.

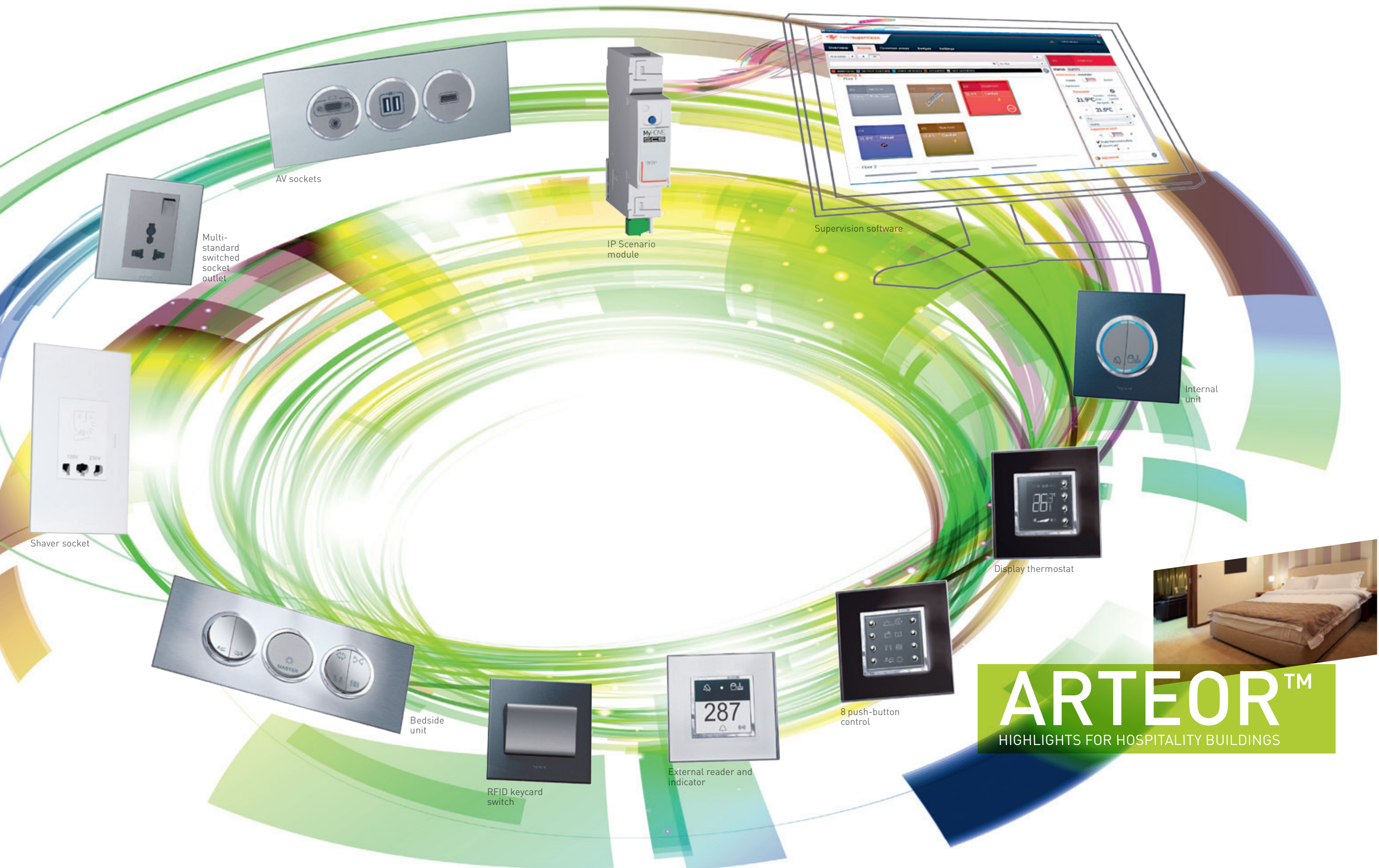


## DLP TRUNKING

Can be fitted with 2, 3, 4, 6 or 8 module wiring accessory supports to install any Arteor™ mechanism: 2P+E socket, RCBO, RJ 45 socket, AV sockets, etc.

Allows for easy adjustment to different room layouts







# BUS SOLUTIONS FOR EFFICIENT HOTEL ROOM AUTOMATION

Do not disturb / Make up room



Door bell and badge reader



## EXTERNAL READER AND INDICATOR

To be installed beside the door in the hallway. Clear indication "Do not disturb"/ "Make up room", door bell and badge reading function

Wake-up and Sleep lighting scenario



Relax scenario: just the right lighting for watching TV or reading



## 8 PUSH-BUTTON CONTROL

The scenario control affords eight individually configurable combinations of various lamps, room temperature settings and blind positions. For the right atmosphere at just one touch.

Open and shut blinds comfortably, at the press of a button



Control the bedside lamp or ensure central lighting control



## INTERNAL UNIT

Installed by the bedside, it allows the guest to comfortably switch on the "Do not disturb"/ "Make up room" sign in the hallway, choosing the desired status.



## RFID FREQUENCY RECOGNITION

To ensure that lights, heating, etc. are switched off when the hotel room is vacated, electricity can only be activated with the programmed hotel card. This makes an important contribution to energy saving.



## DISPLAY THERMOSTAT

The room thermostat enhances comfort, as it enables everyone to set the temperature of their choice.



# STAND-ALONE SOLUTIONS FOR IN-ROOM COMFORT AND ENTERTAINMENT



## BEDSIDE UNIT

Provides enhanced comfort to the customer through convenient control of different lights, shutters or blinds from one single point, without having to get up.

## AV SOCKETS

Arteor™ provides hotel guests with all the multimedia connections they will need: VGA, HDMI, USB sockets and power supplies. They enable guests to connect and use their high-tech equipment in their room.



## MULTISTANDARD SWITCHED SOCKET OUTLET

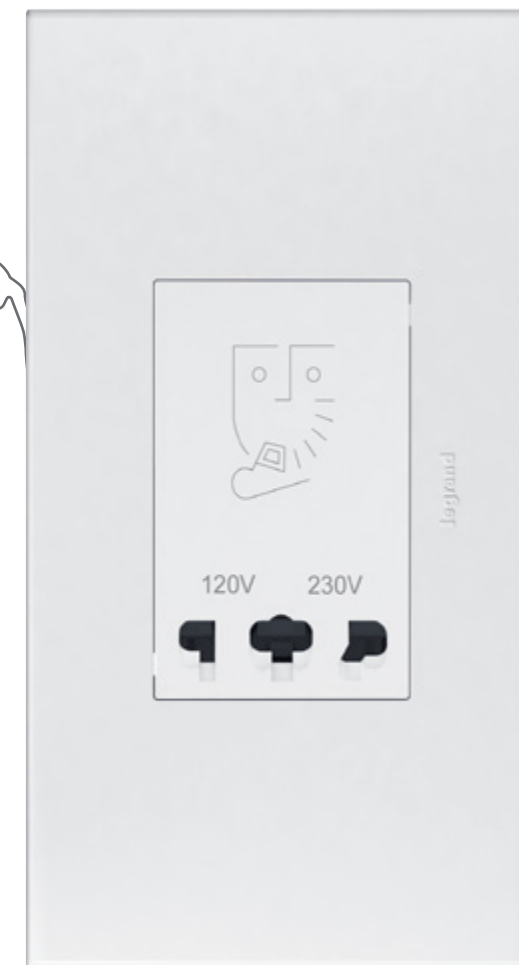
Convenient for international travellers, as it removes the need of adaptors. And safe at the same time, as it offers the standard safety features provided by BS sockets: whatever the plug is, the socket can be switched OFF when inserting the plug, and only be switched ON again once the plug has been inserted.

The safety shutters protect against accidental contacts to live parts.



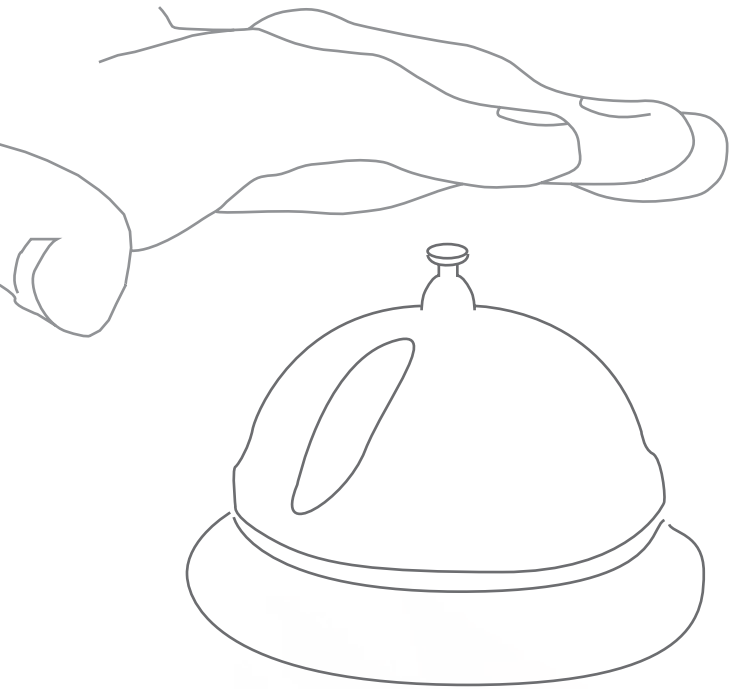
## SHAVER SOCKET

The shaver socket incorporates a double wound isolating transformer for safe use in the bathroom. It can be used with various 2-pin plugs such as European, British, American and Australian. Suitable for 120V and 230V.





# HOTEL ROOM AUTOMATION COMBINE INDIVIDUAL ROOM CONTROL AND CENTRALISED SUPERVISION



## SUPERVISION SOFTWARE

The supervision software enables remote control and management for each individual room from one central point. In this way, temperature and lighting scenarios as well as the "Do-not-disturb / Make up room" signals can be controlled directly from reception, according to whether guests are in their room or not.



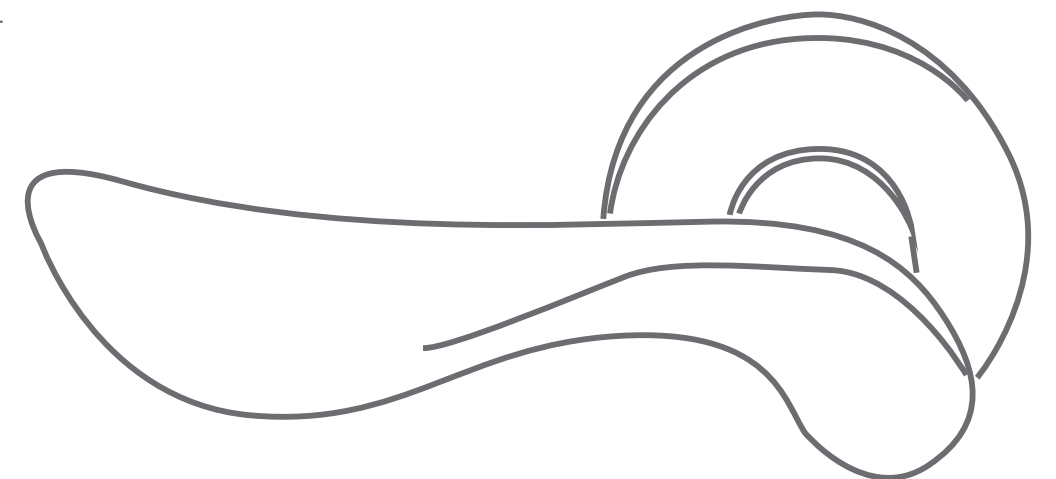
## IP SCENARIO MODULE

It manages up to 50 scenarios for the hotel rooms or different areas and works at the same time as a gateway for the supervision software.

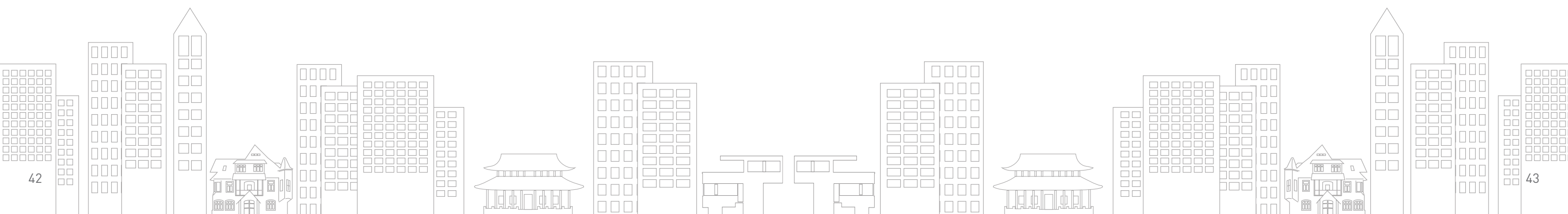
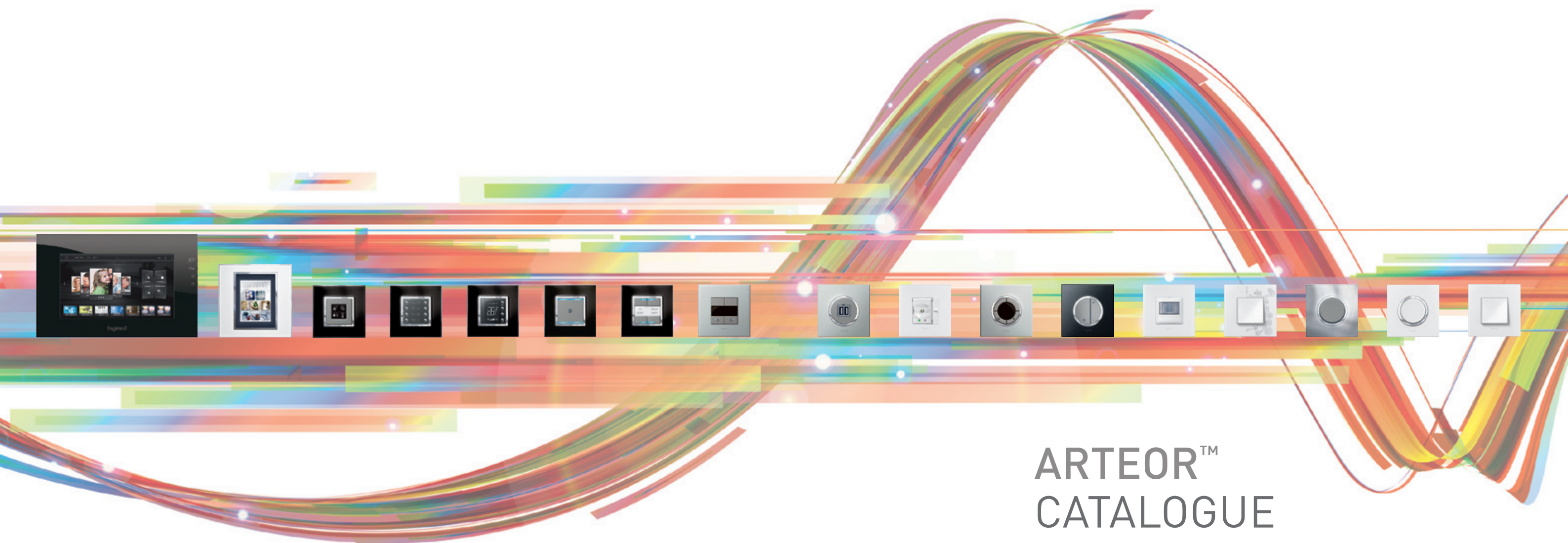


## RFID FREQUENCY RECOGNITION

Together with a badge programming device, the software can also programme badges to work with the specific room reader.









**Catalogue pages to be added by subsidiary**





**World Headquarters  
and International Department**

128, av. du Maréchal-de-Lattre-de-Tassigny  
87045 Limoges Cedex - France

Tel.: +33 (0) 5 55 06 87 87

Fax: +33 (0) 5 55 06 88 88

[www.legrand.com](http://www.legrand.com)